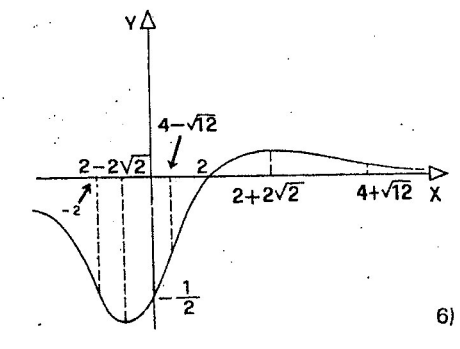
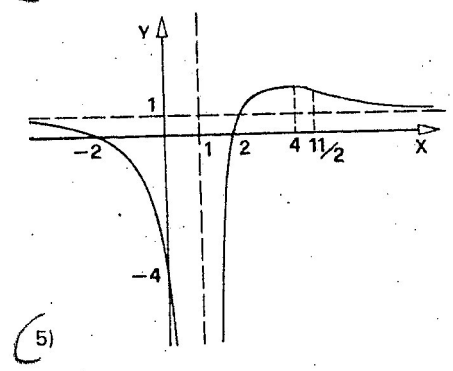
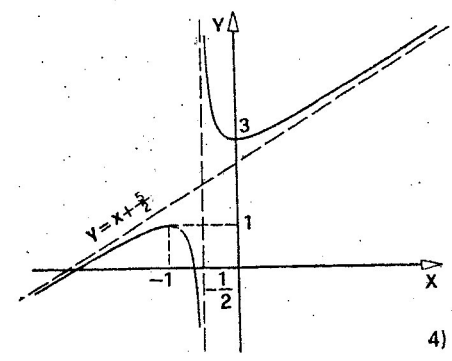
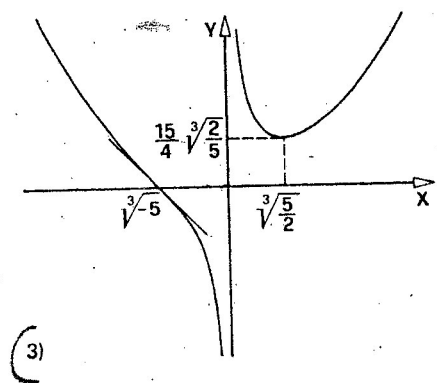
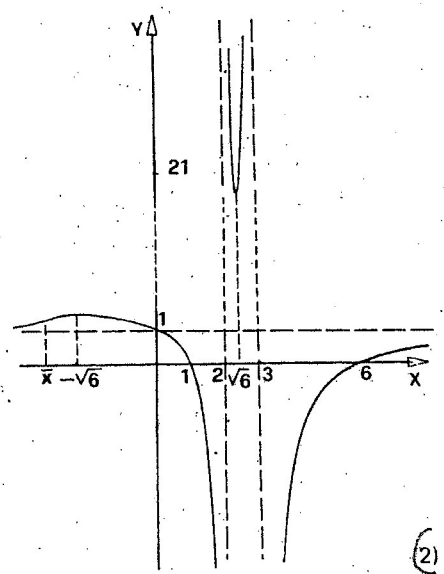
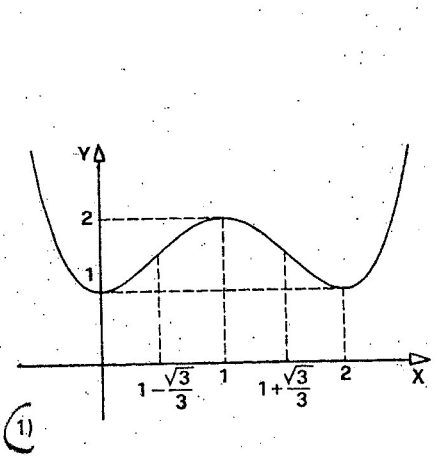


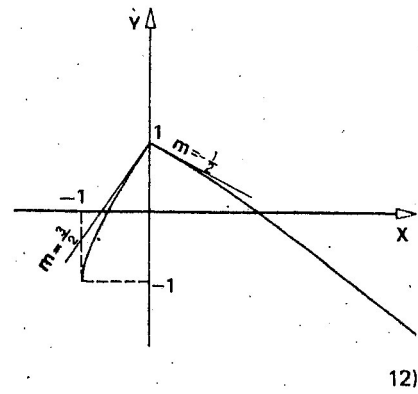
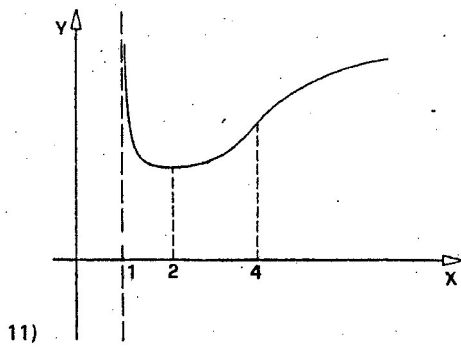
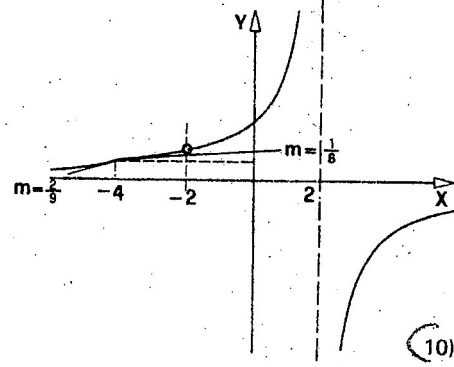
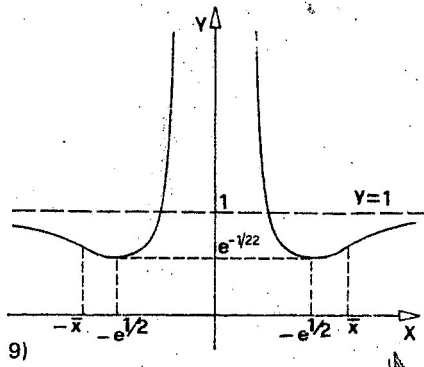
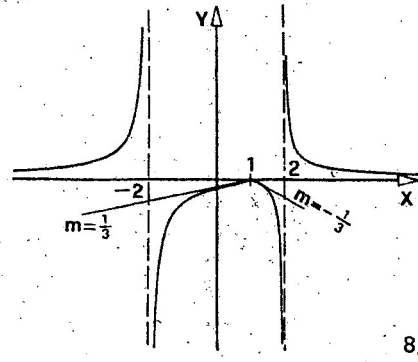
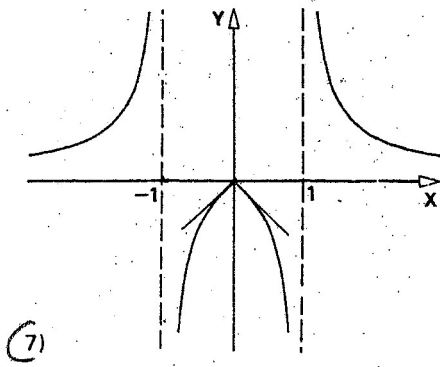
Per ognuno dei grafici che seguono, rispondi alle seguenti domande¹:

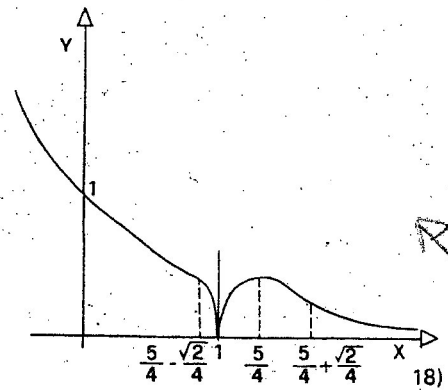
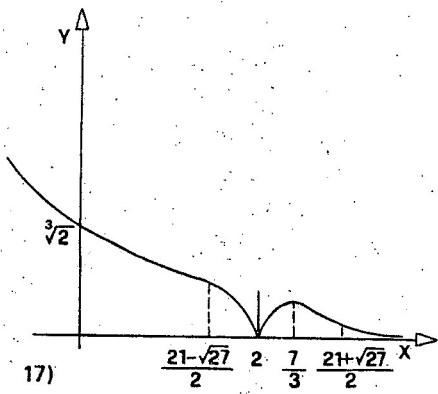
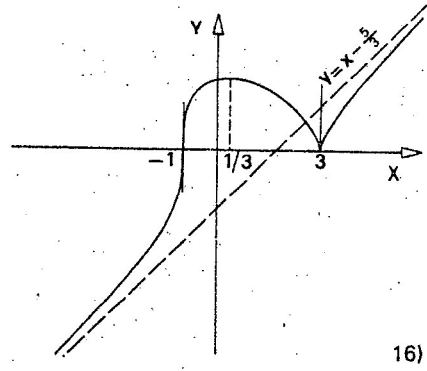
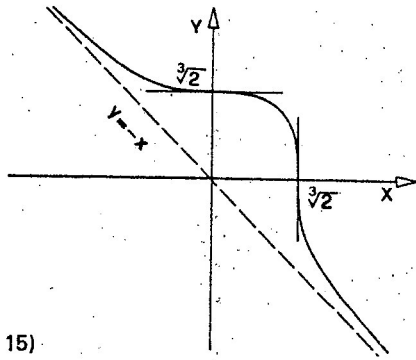
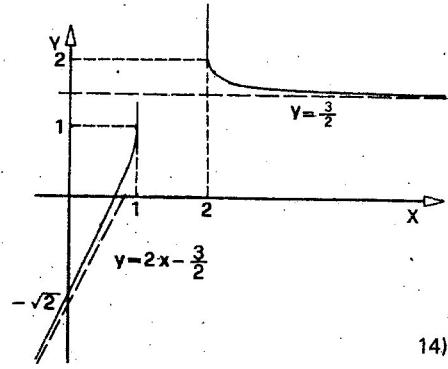
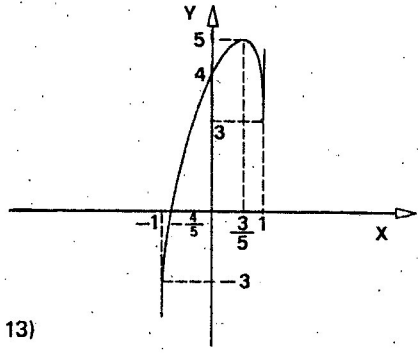
1. Qual è il dominio della funzione?
2. Qual è l'insieme immagine?
3. La funzione è iniettiva?
4. E' invertibile?
5. In quale sottinsieme del dominio la funzione è positiva?
6. La funzione interseca l'asse x? Dove? Interseca l'asse y? Dove?
7. La funzione è limitata? Ha massimo? Se sì, quale? Ha minimo? Se sì, quale?
8. In quali intervalli è monotona?
9. Ha punti di massimo o di minimo? Quali?
10. Quali sono i limiti agli estremi del dominio?
Per ognuno di tali limiti, scrivi per esteso la definizione prima in termini di intorno, e poi in termini di disequazioni.
11. In quali intervalli la funzione è convessa?
12. Ci sono punti di flesso? Quali?

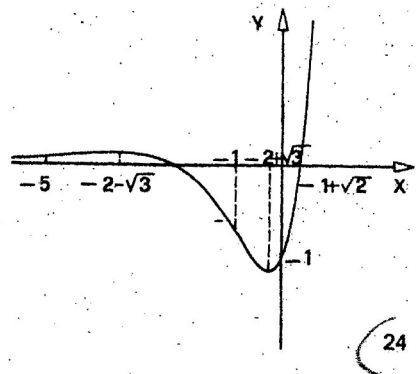
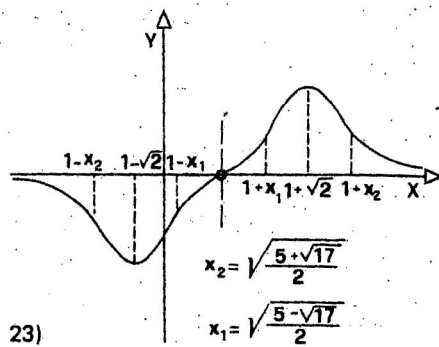
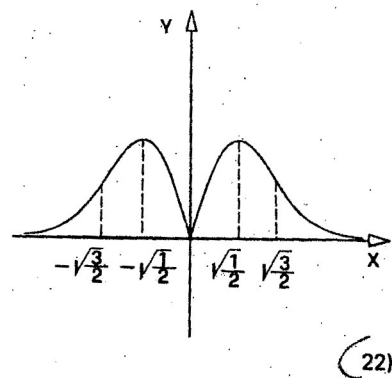
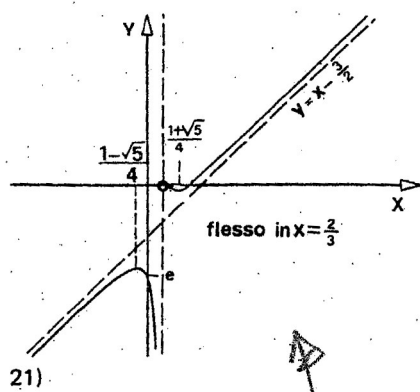
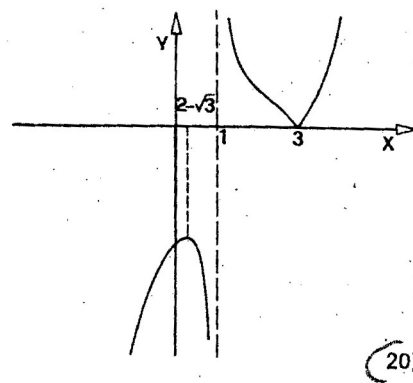
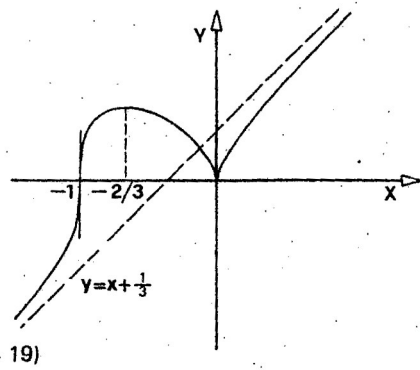
¹ Alla fine del corso dovrai essere in grado di rispondere a tutte le domande.

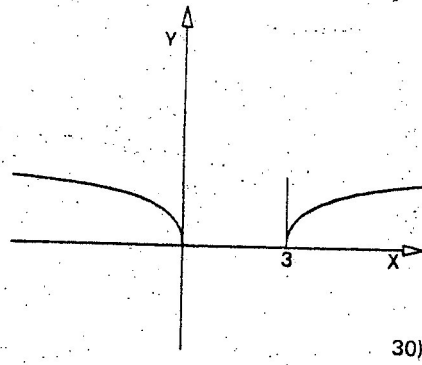
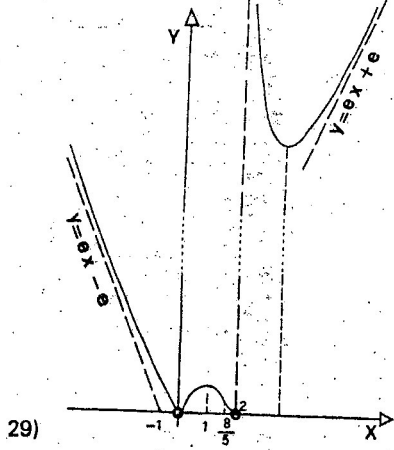
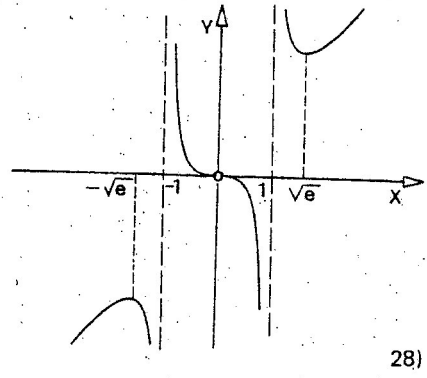
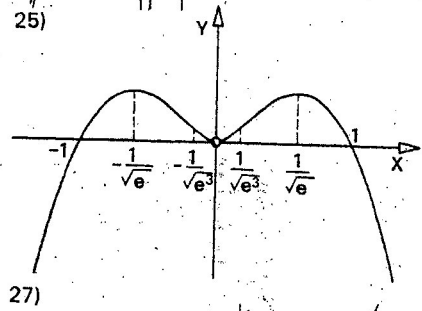
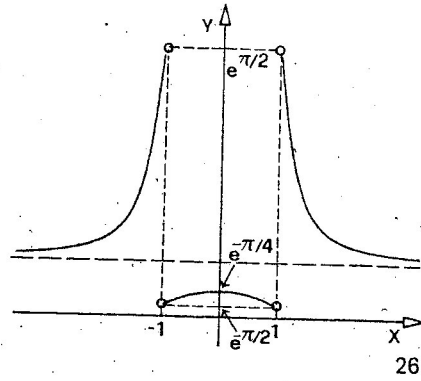
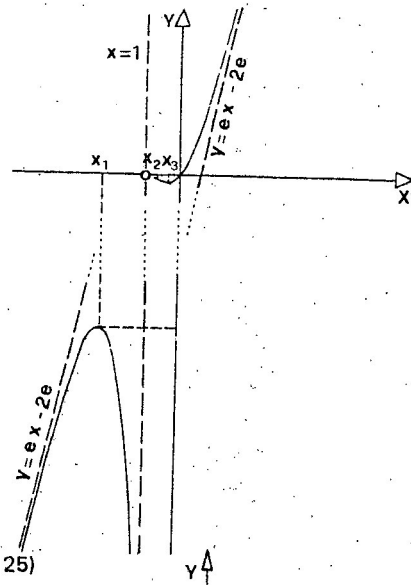
Durante il corso o lo studio del programma potrai limitarti a rispondere alle domande relative agli argomenti già trattati / studiati.

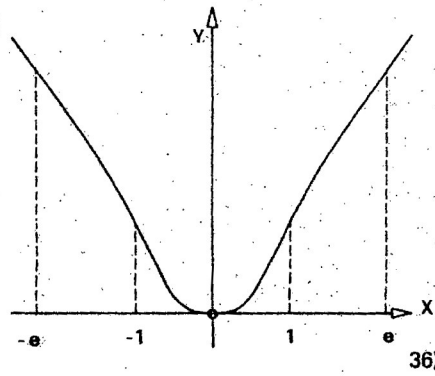
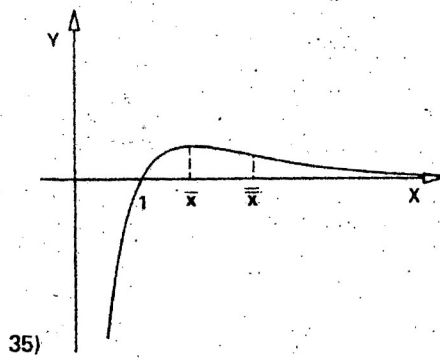
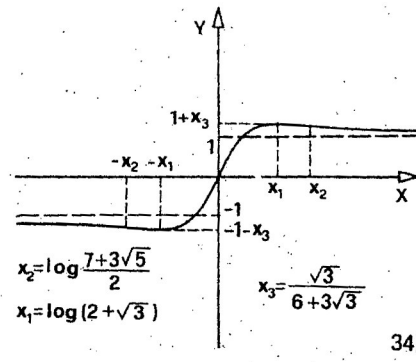
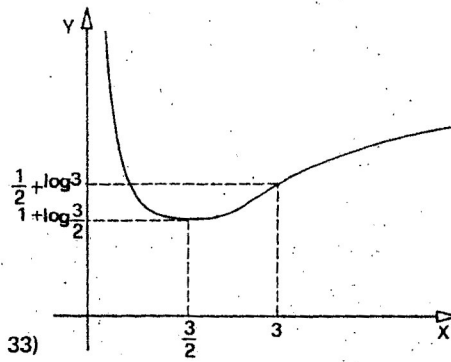
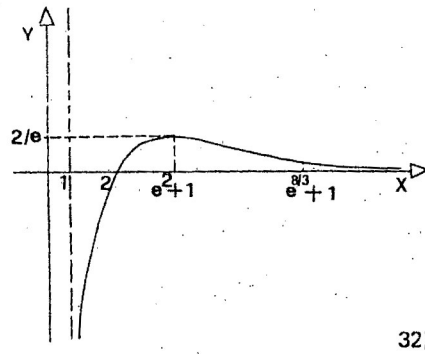
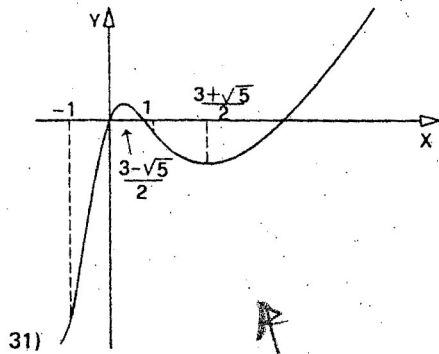


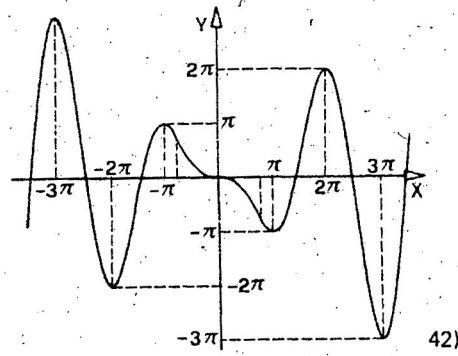
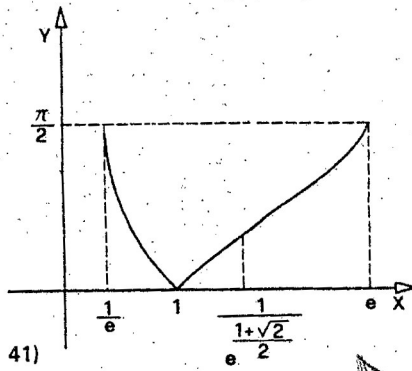
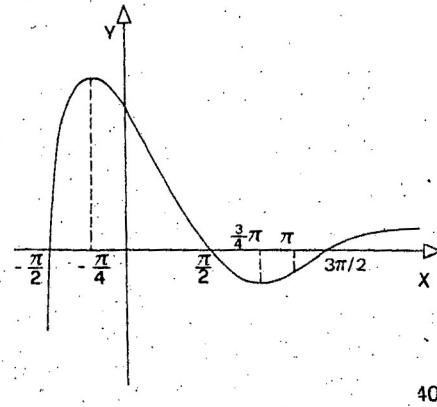
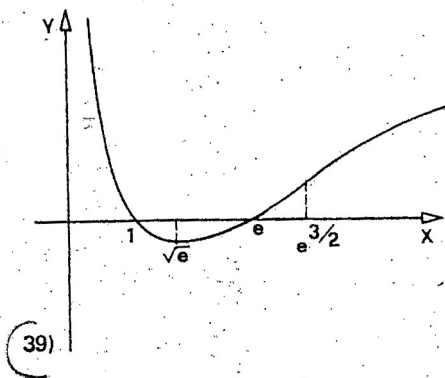
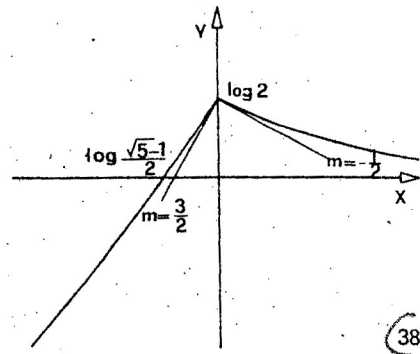
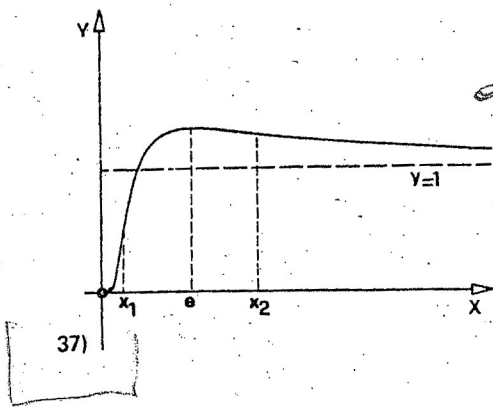












3/2

